

# Marshfield Police Department



Headquarters built 1958 renovations and additions in 1978

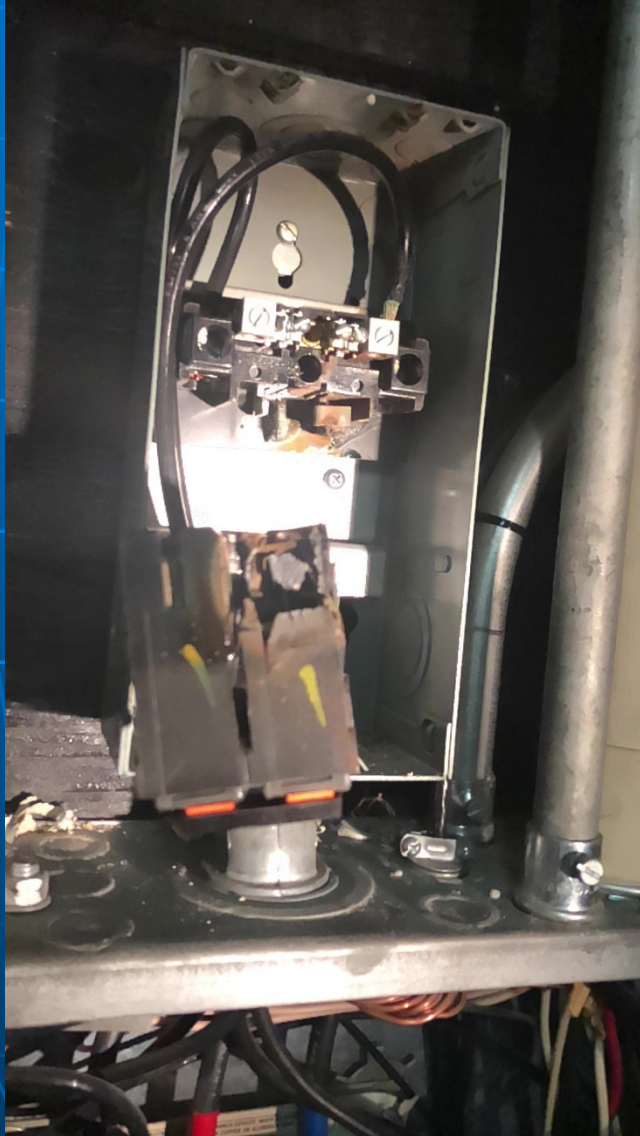
We have advocated for over 30 years to correct the deficiencies

# Town of Marshfield Capital Assessment

## 2014

“Building codes and industry guidelines have changed significantly since the original construction occurred; there are a number of issues affecting the **health, welfare,** and **safety** of the officers, staff and visitors.”

# Electrical



Electrical distribution system is a hazard

# Electrical





# Fire Safety

- Numerous fire hazards in electrical system
- No Sprinkler System
- Inadequate fire alarm system

# Cell Blocks – Non Compliant



The male, female and juvenile cell blocks don't meet the state suicide prevention guidelines

The cell blocks fail The State Department of Public Health inspections yearly

# Prisoner Cleaning

Our source



Modern day, Compliant area



# HVAC



Inadequate heating and cooling systems



Pipe cover removed to prevent pipes from freezing



Space heaters used in various locations to prevent pipes from freezing



# Plumbing

- Asbestos
- Mold
- Parts (can't be replaced)
- Lead Paint
- Water Damage
- Deteriorating Piping

# Plumbing





# Plumbing





# Water Damage



Numerous locations in the police station are subject to water damage from rain and broken pipes resulting in mold build up and water damage in our archives

# Water Damage - Ceiling





# Water Damage - Ceiling



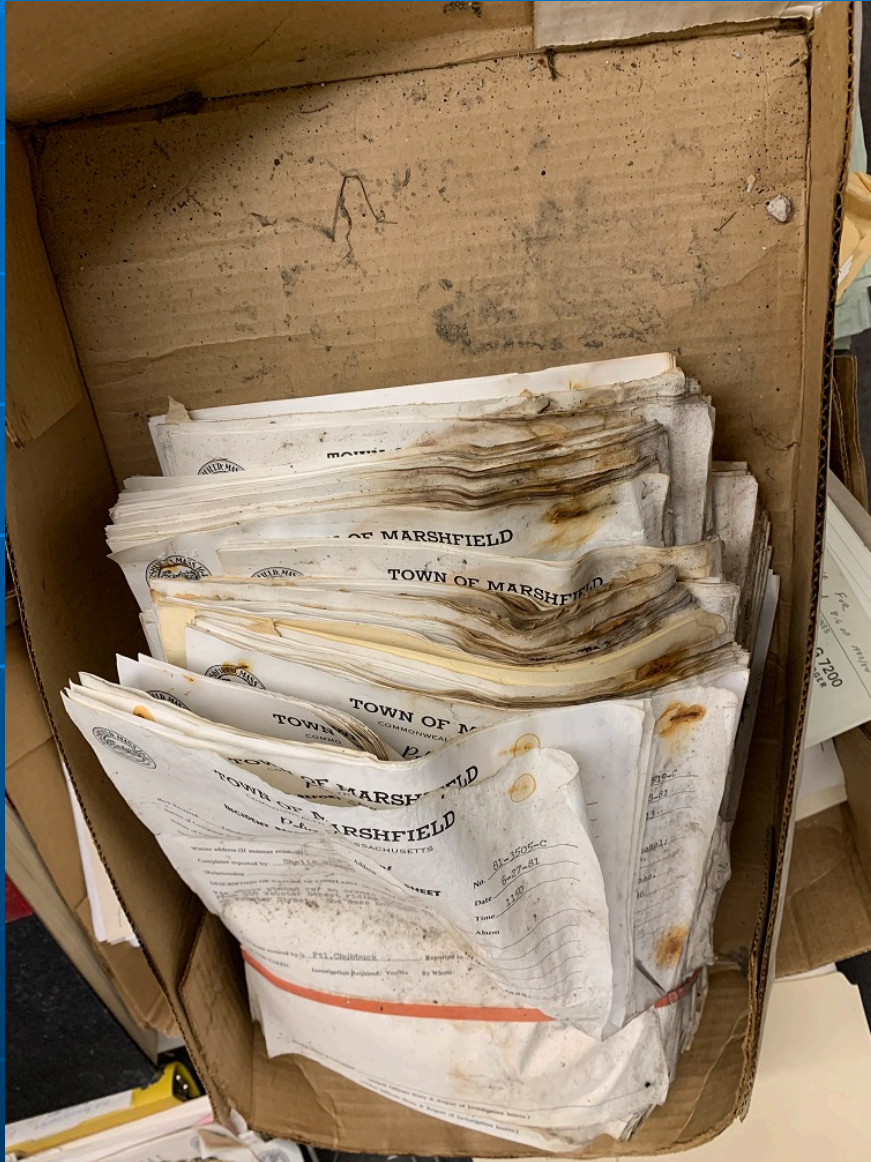


# Water Damage - Structure/Baseboard





# Water Damage – Documents / Files



# Security Issues

- Major safety / security issues exist within the Police Department



# Safety/Security Issues

Rotted damage, can't close and lock prisoner entryway



# Building Code Violations



The entire building including the primary entry is not compliant with ADA and State Building code requirements



# 3 Foot Main Corridor – Low Ceiling



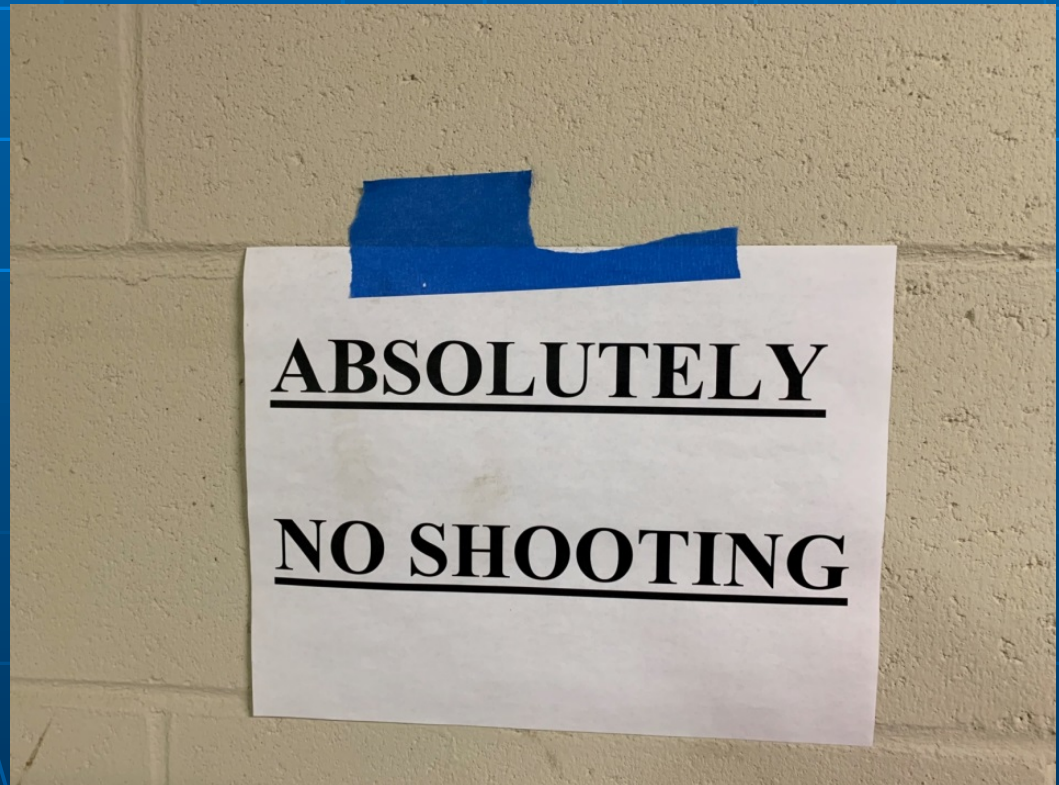
# Evidence – Narrow & Insufficient Storage





# Training Facility

The shooting range has been condemned for years and does not meet OSHA, NIOSH, and EPA standards for air flow and the safe control and collection of lead, currently used for bike storage



# Marshfield Police Department



Duxbury Police



Scituate Police



Norwell Police