

SECTION II - FUNCTIONS

PART A - ASSIGNMENT OF RESPONSIBILITY

1. Purpose

This section identifies the organizations who will respond to a radiological emergency at the Pilgrim Nuclear Power Station (PNPS). It summarizes the individual responsibilities for specific emergency response functions and the basic organizational structure for the Town of Marshfield emergency response effort.

2. Authority

- a. The Town of Marshfield is governed by Selectmen as provided by pertinent laws of the Commonwealth of Massachusetts and by the Marshfield Town Charter.
- b. In accordance with State law, under the Massachusetts Civil Defense Act, Section 13 of Chapter 639, Acts of 1950, as amended, the Selectmen have appointed a local Emergency Management Director. The Board of Selectmen is responsible by law for the health and safety of persons and property, and exercises this authority during civil defense emergencies through the Town Emergency Management Director.

- c. The Radiological Emergency Response Plan has been developed in accordance with local responsibilities of the Town of Marshfield under the Massachusetts Civil Defense Act, M.G.L. Chapter 639, Acts of 1950, as amended by chapter 33, Appendix, Section 13, and is consistent with the Massachusetts Comprehensive Emergency Response Plan, (CEMP). It also conforms with existing Federal guidelines and criteria.

- d. Due to the nature and potential magnitude of an emergency at PNPS, and the need for quick action on the part of local officials, implementation of protective response measures under this plan shall be taken on the basis of local intelligence and/or upon a directive from the Commonwealth through the Massachusetts Emergency Management Agency (MEMA) as described in this plan. Local authorities may consider it necessary to declare a Local Declaration of Emergency at this time under the provisions of State law. Elements of the Commonwealth's laws relating to a Local Declaration of Emergency initiating extraordinary action are contained in Section 31 of Chapter 34, and Section 19 of Chapter 40 and Section 31 of Chapter 44 of the General Laws of the Commonwealth of Massachusetts.

- e. Private agencies have executed Agreements with both the Town and the State, defining their emergency responsibilities. Section III identifies Letters of Agreement for the Town of Marshfield. Agreements with bus companies, ambulance providers and host health care facilities are on file with MEMA Region II.

3. Succession of Authority

- a. Succession of authority in the Town of Marshfield for a response to an emergency at PNPS is as follows:

- (1) Chairman, Marshfield Board of Selectmen
- (2) Selectmen, in descending order of seniority
- (3) Emergency Management Director
- (4) Police Chief
- (5) Fire Chief

- b. If conditions warrant immediate actions, as recommended by the Operations Shift Manager at PNPS, then protective actions as defined in this plan may be initiated by:

- (1) Emergency Management Director or Deputy Director
- (2) Police Chief or his Senior Duty Officer
- (3) Fire Chief or his Senior Duty Officer

4. Primary Organizations

Selected Town, State and Federal agencies, private volunteer organizations, and the Utility are part of the overall response effort. Figure A-1 shows the Town of Marshfield's emergency response organization. Figure A-2 illustrates the interrelationships of the Town, State and Federal and private emergency response organizations. Figure A-3 summarizes each department's/individual's primary,

support and coordination functions. The supervisory personnel of each department/agency is responsible for ensuring continuity of resources (technical, administrative and material). Each organization maintains the capability for 24-hour per day emergency response for a protracted period. Section II-H, Emergency Facilities and Equipment, describes resources available to support the emergency response.

a. Town

The Town organization is responsible for implementing and coordinating Town response to an emergency at PNPS. The Marshfield EOC has the capability to perform essential emergency response functions for an extended period using two twelve-hour shifts of the following key personnel:

Selectman
Emergency Management Director or designee
Communications Officer
Police Department Representative
Fire Department Representative

The departments/individuals of the Town's emergency response organization are identified, along with their respective functions.

(1) Board of Selectmen

- (a) Provides overall direction and control of emergency response.
- (b) As backup to SEOC, ensure coordination of the siren activation if directed by MEMA with Emergency Alert System (EAS).
- (c) Declares Local Declaration of Emergency.
- (d) Ensures 24-hour staffing of emergency organization.

- (e) Approves public information statements for release to the media.
- (f) As backup to SEOC, ensures activation of the Prompt Alert and Notification System if directed by MEMA.
- (g) Ensures implementation of the directed Protective Action.
- (h) Directs town relocation, reentry and return activities.
- (i) Regular review and approval of the Radiological Emergency Response Plan (RERP).

(2) Emergency Management Director

- (a) Activates and manages the EOC.
- (b) Ensures Plans and Procedures are implemented.
- (c) Ensures 24 hours staffing.
- (d) Coordinates response operations.
- (e) Provides information to the MEMA Region II on local conditions.
- (f) Obtains additional resources needed for response.
- (g) Maintains the Radiological Emergency Response Program.
- (h) Coordinates training, drills and systems tests.
- (i) Recommends actions to the Board of Selectmen
- (j) Ensures maintenance and availability of radiological equipment.
- (k) Coordinates Relocation, Return operations.
- (l) Deactivates the EOC.

(3) Police Department

- (a) Receives and performs emergency notifications.

- (b) Provides security at the EOC.
- (c) Provides police communications support from the EOC.
- (d) Notifies beach population.
- (e) Provides backup support for route alerting.
- (f) Coordinates traffic flow for evacuation.
- (g) Recommends alternate evacuation routes.
- (h) Controls access to restricted zones.
- (i) Provides security for restricted zones.
- (j) Deploys Harbormaster.
- (k) Assists with implementation of Relocation, Reentry and Return activities.

(4) Fire Department

- (a) As backup to SEOC, activates the siren system for public notification if requested by MEMA.
- (b) Conducts siren route alerting.
- (c) Assists the special needs population.
- (d) Assists with implementation of Relocation, Reentry and Return activities.

(5) Special Needs

- (a) Maintains Special Needs list.
- (b) Coordinates assistance to the Special Needs Population.

- (c) Coordinates transportation for Special Needs Population.
- (d) Assists with the implementation of Relocation, Reentry and Return activities.

(6) Public Works Department

- (a) Maintains evacuation routes in passable condition.
- (b) Provides traffic and access control equipment.
- (c) Restricts surface water supply to public, if necessary.
- (d) Assists in establishing alternate evacuation routes.
- (e) Provides transportation for emergency workers and equipment.
- (f) Assists with implementation of Relocation, Reentry and Return activities.

(7) Harbormaster

- (a) Provides emergency notification to boaters.
- (b) Assists in controlling access to marine areas.
- (c) Coordinates response actions with U.S. Coast Guard.
- (d) Provides security at the marina.
- (e) Assists with the implementation of Relocation, Reentry and Return activities.

(8) School Department

- (a) Notifies and implements Protective Actions for the school population.
- (b) Coordinates transportation of school population.
- (c) Provides facilities to support transportation assistance and sheltering of the public.

(9) Radiological Officer

- (a) Distributes dosimetry and record forms to EOC Emergency Management staff, agency personnel, and agency dosimetry coordinators.
- (b) Monitors radiation levels at EOC.
- (c) Ensures compliance with emergency worker exposure limits.
- (d) Advises EOC and Field staff of MDPH adjustments to DRD limits.
- (e) Advises EOC staff and MEMA Region II on emergency worker exposure.
- (f) Maintains emergency worker radiological records.
- (g) Ensures maintenance and availability of radiological equipment.
- (h) Coordinates radiological monitoring and decontamination.
- (i) Request any additional resources from MEMA Region II Radiological Officer.
- (j) Assists with the implementation of Relocation, Reentry and Return activities.

(10) Transportation Coordinator

- (a) Coordinates provision of transportation resources for evacuation.
- (b) Coordinates Transportation Staging Area Activities.
- (c) Assists with the implementation of Relocation, Reentry and Return activities.

(11) Public Information Officer

- (a) Serves as spokesperson to the media.
- (b) Provides news statements on town response.
- (c) Exchanges information with spokespersons from other response organizations.
- (d) Provides for rumor control.
- (e) Obtains Selectmen approval of news statements for PIO.

(12) Shelter Officer

- (a) Coordinates operations of public and private shelters.

(13) Communications Officer

- (a) Activates and manages EOC Communications Center.
- (b) Ensures adequate staffing of communications center.
- (c) Supports EOC operations with radio communications.
- (d) Ensures message-handling procedures are implemented.

(14) PNPS Community Liaison

- (a) Serves as a resource to the Marshfield Emergency Management Director and elected officials.
- (b) Assists the Emergency Management Director, as requested to monitor town response actions.

(15) Transportation Staging Group

- (a) Provide staff support to Transportation Staging Area.

(16) Tow Truck Provider

- (a) Coordinates tow truck requirement and requests with Marshfield Police Department.
- (b) Provides tow truck service in the Town of Marshfield, as required.

(17) Rumor Control Officer

- (a) Provides for Rumor Control for the general public.
- (b) Refers media calls to Joint Information Center.
- (c) Apprises Public Information Officer of recurrent rumors.

b. Plymouth County

(1) Plymouth County Sheriffs Department

- (a) Directs the evacuation of the Plymouth County House of Correction.
- (b) Assists in the evacuation of EPZ town jails, upon request.
- (c) Supports traffic and access control activities.
- (d) Provides support for EPZ town police departments and Transportation Staging Areas.

c. Massachusetts Emergency Management Agency (MEMA) - Region II
Emergency Operations Center (EOC) Organization

The MEMA Region II Response organization is made up of MEMA Region II staff, MEMA SEOC staff, representatives of agencies covered by Executive Order 144 and other groups necessary for the MEMA Region II response program. See Figure A-4.

The MEMA Region II organization is responsible for directly supporting EPZ and reception community response and for coordinating functions that require a multi-community effort. In addition, MEMA Region II will coordinate information and resources between the State and the communities. The key departments/individuals of MEMA Region II's emergency response organization are Manager, Operations Officer, Radiological Officer, Transportation Officer, Special Facilities Coordinator, Public Information Assistant and Communications Officer. The key personnel shall establish the

capability for operations on a 24-hour basis, including manning communication links, as appropriate. The key personnel shall also be responsible for ensuring continuity of resources, including technical, administrative and material support.

(1) MEMA Region II EOC Staff

(a) MEMA Region II Manager

- Activates and manages the MEMA Region II EOC.
- Coordinates support to local communities.
- Obtains additional resources from MEMA SEOC, as required.
- Coordinates reception center activities with EPZ Towns.
- Assists in developing and maintaining the MEMA Region II Emergency Response Program.
- Notifies MEMA Region II Emergency Response Organizations/Facilities.

(b) MEMA Region II Operations Officer

- Coordinates EOC operations.
- Establishes 24-hour staffing for the EOC.
- Assists EOC staff in resolving operational problems.
- Updates EOC staff on a periodic basis.

(c) MEMA Region II Assistant Operations Officer

- Assists Operations Officer in coordinating EOC Operations.

- (d) MEMA Region II Public Information Assistant
 - Assists the MEMA Region II Manager in providing information about MEMA Region II emergency response to the State Public Information Officer or the MEMA Director.

- (e) MEMA Region II Intelligence Officer |
 - Gathers emergency response information updates from EPZ and Reception Center EOCs.
 - Advises MEMA Region II Manager of current status of local activities.

- (f) MEMA Region II Technical Hazards Specialist |
 - Assists MEMA Region II Manager and support staff concerning implementation of local and MEMA Region II plans and standard operating procedures.

- (g) MEMA Region II Radiological Officer
 - Monitors PADs, plume characteristics, and dose projections and relays to EOC staff and Town/Agency Radiological Officers.
 - Monitors Reception Center and Regional Emergency Worker Monitoring and Decontamination Station with the MDPH, Town and EO-144 Agency Radiological Officers.
 - Monitors emergency worker exposures and relays to the MEMA Radiological Officer at MEMA SEOC in Framingham.
 - Provides additional radiological equipment to towns, as needed.

- (h) MEMA Region II Assistant Radiological Officer
 - Assists Radiological Officer and maintains communications with state, county, Federal emergency workers.
- (i) MEMA Region II Transportation Group
 - Coordinates additional State and private transportation resources for hospitals, nursing homes, group homes, special needs populations, schools, licensed day care centers, camps, Myles Standish State Forest, and the transportation-dependent public.
- (j) MEMA Region II Communications Group
 - Coordinates radio communications between MEMA Region II and Town/City emergency response organizations.
 - Provides supplementary communications coordination for field operations, as necessary.
- (k) MEMA Region II Documentation Unit
 - Assures the routing and delivery of EOC messages, incoming and outgoing, internal and external.
 - Provides a permanent record of emergency communications.

(I) MEMA Region II Special Facilities Group

- Coordinates assignments of nursing homes, special facilities, mobility impaired, Reception Centers and REWMDS to host facilities.
- Assists school officials in notifying schools outside the EPZ having students who reside within the EPZ.

(I) Administrative Assistant

- Prepares message forms for MEMA Region II Manager, and other administrative duties as requested.

(2) Region II EO 144 Support Staff

(a) Massachusetts State Police Troop D, Middleborough, Troop Commander

- Activates and coordinates the Traffic Control Plan.
- Coordinates and supports state traffic and access control resources.
- Supports EPZ towns in providing security for evacuated areas.
- Provides security at the MEMA Region II EOC.
- Establish operations on a 24-hour basis.

(b) Massachusetts Department of Transportation MassDOT
Maintenance Engineer

- Coordinates state traffic and access control equipment support (barricades, signs, traffic cones, etc.).
- Assists local public works departments to assure that roads remain passable.
- Coordinates MassDOT activities with other Districts.
- Establish operations on a 24-hour basis.

(c) Massachusetts National Guard Task Force Commander

- Coordinates National Guard transportation resources.
- Coordinates National Guard support for traffic and access control, and security for evacuated areas.
- Provides resource support for state response activities.
- Establish operations on a 24-hour basis.

(d) Department of Conservation and Recreation, Myles Standish
State Forest, Principal Forester and Park Supervisor

- Performs notification of visitors at State Forest.
- Establishes access and traffic control in the Forest.
- Establishes operations on a 24-hour basis.

(e) Department of Correction (DOC)

- Performs notification of inmates and staff at MCI-Plymouth.
- Coordinates actions necessary for the protection (sheltering or evacuation) of staff and inmates.

- Provides a Host Detention Facility at DOC-Bridgewater Complex for inmates and staff of MCI-Plymouth and Plymouth County Correction Facility.

(f) Plymouth County Sheriff's Department Sheriff

- Performs notification of inmates and staff at Plymouth County Correction Facility.
- Coordinates actions necessary for the protection (sheltering or evacuation) of staff and inmates.
- Establish operations on a 24-hour basis.

(g) American Red Cross EOC Representative

- Coordinates Red Cross activities at mass care shelters.
- Maintains communication with State, field and Reception Center Communities' ARC contact.
- Establish operations on a 24-hour basis.

(h) Massachusetts Bay Transportation Authority (MBTA) Representative

- Provides transportation equipment for the Department of Correction, MCI-Plymouth and Plymouth County Correction facilities as requested.
- Provides additional vehicles, if required, to augment transportation providers.
- Coordinates EPZ commuter rail activities.

c. MEMA SEOC Response Organization - SEOC

The MEMA SEOC Response Organization is responsible for overall direction of the response, coordination of State resources to support community response, and for performing technical response functions on behalf of the communities. The State EOC will coordinate support to the communities through MEMA Region II. The key departments of the SEOC emergency response organization are listed below along with their respective response functions. The supervisory personnel as indicated in parentheses for the following departments or agencies are responsible for establishing 24-hour operations and continuity of resources.

(1) MEMA SEOC Staff

(a) Governor

- Provides overall command and control.
- May issue public information statements.
- Authorizes Protective Action Directives.
- Declares State of Emergency.

(b) MEMA (Director)

- Activates and manages the State EOC.
- Coordinates public notification.
- Activates the Emergency Alert System (EAS).
- Forwards protective actions to the Governor in conjunction with MDPH recommendations.
- Issues Protective Action Directives to MEMA Region II and local officials which may include precautionary actions.
- Coordinates State resources.
- Establishes 24-hour staffing of State EOC.

- Controls access of air and rail traffic (see Exhibit 6, Letters of Agreement, in the State Radiological Emergency Response Plan [RERP]).
- Disseminates information in advance of an emergency to inform the public of actions to take during the emergency.
- Develops and maintains the State radiological emergency response program.
- Provides additional radiological equipment for emergency workers.
- Provides additional resources to local communities through MEMA Region II.
- Conducts drills, exercises, training, and system tests.
- Provides a representative to the PNPS Emergency Operations Facility (EOF) and Joint Information Center.

(c) MDPH

- Recommends protective actions to MEMA for forwarding to the Governor.
- Performs accident assessment functions.
- Coordinates environmental monitoring and sampling.
- Performs facility and individual monitoring and implements decontamination recommendations as required.
- Provides for laboratory analysis of environmental samples.
- Coordinates with Federal agencies providing radiological technical support.
- Provides for exposure control for emergency workers.

- Provides monitoring and decontamination guidance for emergency workers.
- Recommends to MEMA activities related to relocation, re-entry, or return of the public.
- Establishes protective actions for the ingestion exposure pathway EPZ.
- Authorizes the use of potassium iodide (KI) for emergency workers.
- Maintains statewide list of public, private and military hospitals.
- Disseminates public information to the agricultural communities within the ingestion exposure pathway (50 miles).

(d) Massachusetts State Police Headquarters (Colonel)

- Provides support for traffic and access control through Troop D at the MEMA Region II EOC.
- Provides security for State EOCs.
- Provides support for town police departments through MEMA Region II EOC.

(e) Massachusetts Department of Transportation (MassDOT)
Headquarters (Commissioner)

- Provides traffic and access control equipment.
- Provides resources to keep roads passable.

- Provides support to local public works departments through MEMA Region II EOC.

(f) Massachusetts National Guard Headquarters (Adjutant General)

- Supports law enforcement agencies for access control and security for evacuated areas.
- Transports emergency supplies.

(g) Massachusetts Department of Environmental Protection (Water Supply Division Director)

- Collects water samples within the ingestion exposure pathway EPZ upon request of MDPH.
- Restricts the use of public drinking water supplies found to be contaminated.

(h) Massachusetts Department of Conservation and Recreation (Forest and Parks Division Director)

- Provides emergency notification and clearing of the public in state parks.

(i) Massachusetts Department of Food and Agriculture (Commissioner)

- Controls contaminated foodstuffs.
- Maintains list of agricultural facilities within the ingestion exposure pathway EPZ.

- Collects agricultural-related samples upon the request of MDPH.

(j) Massachusetts Department of Agricultural Resources, Division of Marine Fisheries (Commissioner)

- Collects shellfish samples within the ingestion exposure pathway EPZ upon the request of MDPH.
- Controls contaminated aquatic foods.

(k) Department of Correction (Commissioner)

- Coordinates actions necessary to support evacuation of MCI-Plymouth.
- Provides assistance, and support if requested and as resources allow, in the evacuation of the Plymouth County Correction Facility.
- Provides a Host Detention Facility at the Department of Correction Bridgewater Complex for inmates and staff of MCI-Plymouth and Plymouth County Correction Facility.

(l) American Red Cross (ARC EOC Officer)

- Supports operations of Mass Care Shelters and Reception Centers.

(m) U.S. Coast Guard (First Coast Guard District Commander)

- Provides emergency notification over Marine Radio to boaters operating between Boston and Providence, RI.
- Coordinates access control to marine areas.

- Coordinates response actions with Town Harbormasters.
- Coordinates exposure control of USCG personnel with MEMA Region II.

d. Federal

The Federal Government is responsible for providing both technical and operational support to the communities through the State. The key departments of the federal response are identified, along with their respective response functions. Supervisory personnel, as indicated in parenthesis for the following departments or agencies, are responsible for establishing 24-hour operations and continuity of resources.

(1) Federal Agency Assignments

(a) Nuclear Regulatory Commission (Region I Director)

- Assesses nature and extent of radiological incident onsite.
- Assesses potential offsite consequences.
- Provides technical advice and recommendations for protective actions.

(b) Federal Emergency Management Agency (Region I Director)

- Coordinates overall offsite federal response.
- Provides federal resources and assistance to State and Town/City governments.
- Ensures adequate federal agency support exists for recovery operations.
- Provides a liaison to the State EOC.

(c) Department of Energy (Region I Director)

- Activates Federal Radiological Monitoring and Assessment Plan (FRMAP).
- Provides radiological monitoring and sampling assistance.
- Provides assessment and evaluation assistance.

(d) Department of Agriculture (Region Director)

- Coordinates with and supports State and local governments in protecting and assessing the damage to agricultural products.
- Procures food for emergency feeding programs.
- Provides technical information and advice for farmers.

(e) Environmental Protection Agency (Region Director)

- Assists with field radiological monitoring and sampling.
- Provides guidance in formulating protective action advisories.
- Assists with relocation, reentry and return guidance.
- Coordinates post-emergency federal radiological monitoring and sampling activities.

(f) Department of Transportation (Director of Emergency Transportation)

- Assists State and local jurisdictions with department resources, including equipment needed for impediment removal.

(g) Department of Health and Human Services (Emergency Coordinator)

- Assists in testing food products for safety.
- Ensures availability of essential human services.

(h) Department of Housing and Urban Development (Emergency Coordinator)

- Plans for and provides emergency housing.

(i) National Communications System (Regional Emergency Communications)

- Provides for essential communications requirements in an emergency area.
- Supports Federal communications needs.

(j) Federal Aviation Administration (Regional Director)

- Restricts airspace within a 10-mile radius of PNPS during emergency as requested through the Massachusetts Aeronautics Commission.

(k) Department of Commerce

- Provides, via NOAA, current and forecast meteorological information.

e. Utility (Emergency Director)

PNPS is responsible for providing emergency notification and technical information to the State in support of the Town response. The Utility's response functions are as follows:

- (1) Provides timely emergency notification to offsite emergency response organizations.
- (2) Provides pertinent data from onsite and offsite radiological monitoring to MEMA and MDPH.
- (3) Provides current, concise accident assessment data.
- (4) Provides recommendations for offsite protective actions.
- (5) Operates the EOF.
- (6) Establishes the Joint Information Center.
- (7) Sponsors annual media orientation training.
- (8) Provides for processing emergency worker Dosimetry Life Record Dosimeters (DLRs) on a 24-hour basis during an emergency.
- (9) Establish operations on a 24-hour basis.

f. Private

(1) Bus Companies (Owner/Operator)

Provides transportation support for evacuation in the form of vehicles and drivers.

(2) Ambulance Companies (Owner/Operator)

Provides transportation for the evacuation of hospitals, nursing homes and members of the public with serious medical problems.

(3) Hospitals (Administrator)

- (a) Serves as host facilities for evacuating hospitals, nursing homes, and certain special needs individuals.
- (b) Provides treatment for those who are contaminated and/or injured.

Figure A-1

Marshfield Emergency Response Organization

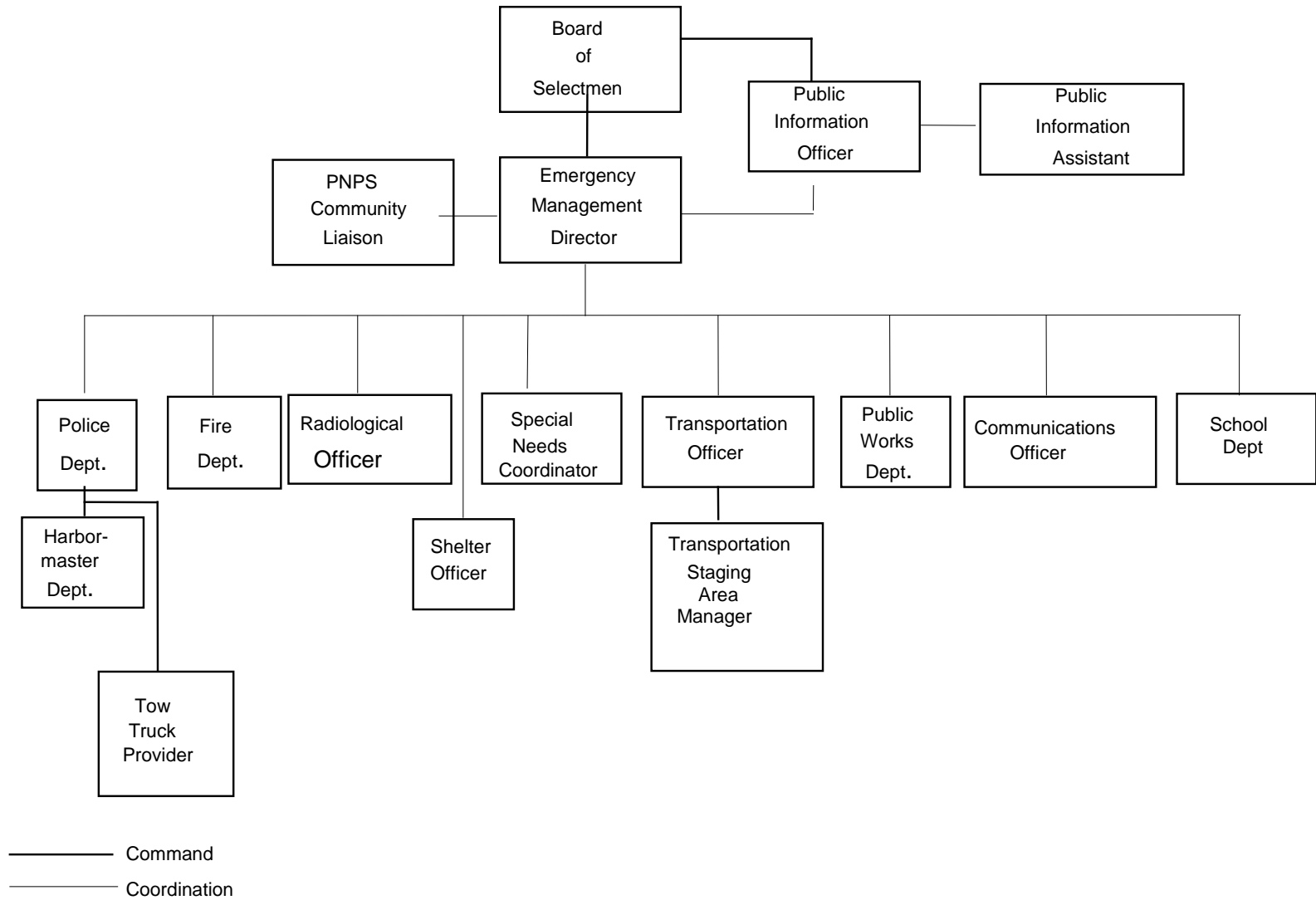


Figure A-2

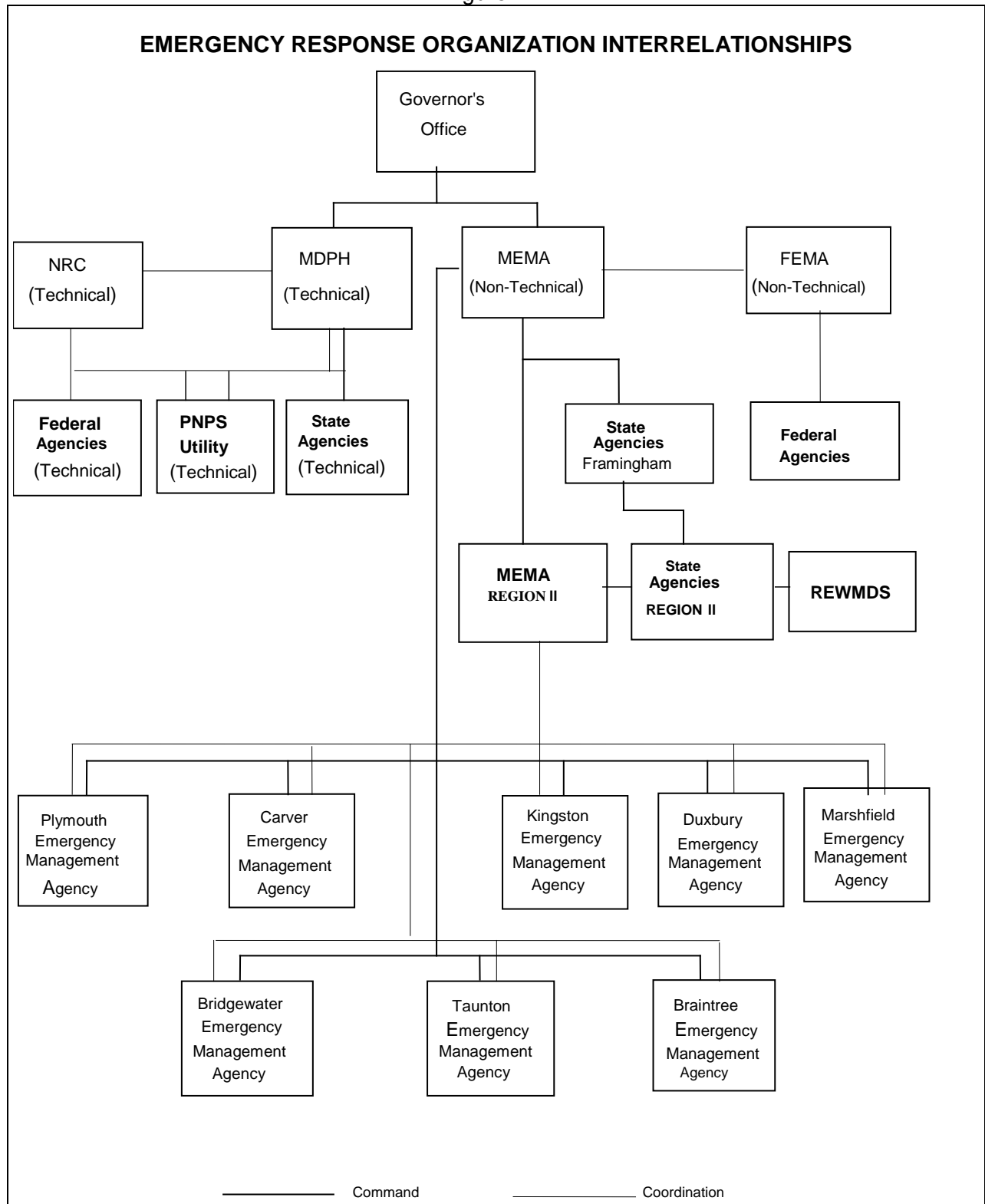


Figure A-3

| Town Emergency Organization Responsibilities | | | | | | | | | | | | | | | | | |
|---|---------------------|---------------------|------------------------|--------------------|---------------------|---------------|-----------------|-----------------|----------------------------|----------------------------|-----------------|----------------|---------------------|-------------------------------|-------------------------|---------------------------|----------------------------|
| <div>Response Functions</div> <div>Responsible Departments/ Individuals</div> | Command and Control | Public Notification | Notification and Comm. | Public Information | Accident Assessment | Public Health | Social Services | Fire and Rescue | Traffic and Access Control | Emergency Medical Services | Law Enforcement | Transportation | Protective Response | Radiological Exposure Control | Resources and Equipment | Food, Water, Milk Control | Relocation/Reentry/Return` |
| TOWN | | | | | | | | | | | | | | | | | |
| Board of Selectman | P | S | | S | | S | | | | | | | P | | S | | P |
| Emergency Management Director | S | S | | | | | | | | | | | S | | P | | S |
| Police Department | | S | P | | | | | | P | P | P | | S | S | S | | S |
| Fire EMS Department | | P | S | | | | | P | S | P | | S | S | S | S | | S |
| Special Needs Officer | | | | | | | | | | | | S | | | | | |
| Public Works Department | | S | | | | | | | S | | | S | S | | S | | S |
| Harbormaster | | S | | | | | | | S | | S | | S | | S | | |
| School Department | | | | | | | | | | | | S | S | | S | | |
| Radiological Officer | | | | | | | | | | | | | | P | S | | S |
| Transportation Officer | | | | | | | | | | S | | P | | | S | | S |
| Public Information Officer | | S | | P | | | | | | | | | | | | | S |
| Shelter Officer | | | | | | | | | | | | | S | | S | | |
| Communications Officer | | | S | | | | | | | | | | | | S | | S |
| PNPS Community Liaison | | | | | | | | | | | | | S | | | | |
| Civil Air Patrol | | | | | | | | | | | | S | | | | | |
| Tow Truck Provider | | | | | | | | | S | | | | | | | | |
| COUNTY | | | | | | | | | | | | | | | | | |
| County Sheriff's Department | | S | S | S | | | | | S | | S | | S | | S | | |

P = Primary

S=Support

Figure A-4

| Emergency Organization Responsibilities | | | | | | | | | | | | | | | | | | |
|---|---------------------|---------------------|------------------------|--------------------|---------------------|---------------|-----------------|-----------------|----------------------------|-------------------|-----------------|----------------|---------------------|-----------------------|-------------------------|---------------------------|----------------------------|--|
| Response Functions | Command and Control | Public Notification | Notification and Comm. | Public Information | Accident Assessment | Public Health | Social Services | Fire and Rescue | Traffic and Access Control | Emergency Medical | Law Enforcement | Transportation | Protective Response | Radiological Exposure | Resources and Equipment | Food, Water, Milk Control | Relocation/Reentry/Return` | Responsible Departments/ Individuals |
| | | | | | | | | | | | | | | | | | | |
| MEMA – REGION II | | | | | | | | | | | | | | | | | | |
| Region II Manager | S | | S | | | | | | | | | | S | | S | | S | |
| Region II Operations Officer | | | | S | | | | | | | | | S | | | | | |
| Region II Radiological Officer | | | | | | | | | | | | | | S | | | | |
| Region II Transportation Officer | | | | | | | | | | S | | P | | | | | | |
| Region II Communications Officer | | | S | | | | | | | | | | | | | | | |
| Region II Special Facilities Coordinator | | | S | | | | | | | | | | | | | | | |
| State Police Troop D | | | | | | | | | S | | S | | S | | | | | S |
| Department of Transportation | | | | | | | | | S | | | | | | S | | | |
| National Guard | | | | | | | | | S | | S | S | | | S | | | S |
| American Red Cross | | | | | | | S | | | | | | S | | | | | |
| MBTA | | | | | | | | | | | | S | | | | | | |
| MEMA – FRAMINGHAM | | | | | | | | | | | | | | | | | | |
| Governor's Office | P | | | P | S | | | | | | | | P | | | | | P |
| MEMA/OEP | S | P | S | S | S | | | | | | | | S | S | S | | | S |
| Department of Public Health | | | | S | P | P | | | | | | | S | P | | P | P | |
| State Police | | | | | | | | | S | | S | | S | | | | | S |
| Highway Department | | | | | | | | | S | | | | | | S | | | |
| National Guard | | | | | | | | | S | | S | S | | | S | | | S |
| Department of Environmental Protection | | | | | | | | | | | | | | | | S | S | |
| Department of Conservation and Recreation | | S | | | | | | S | | | | | S | | | | | |
| Food and Agriculture | | | | | S | | | | | | | | | | | | S | S |
| Department of Agricultural Resources | | | | | S | | | | | | | | | | | | S | S |
| American Red Cross | | | | | | | S | | | | | | | | | | | |
| Civil Air Patrol | | | | | | | | | | | | S | | | | | | |
| PNPS Community Liaison | | | | | | | | | | | | | S | | | | | |
| FEDERAL | | | | | | | | | | | | | | | | | | |
| U.S. Coast Guard | | S | | | | | | | S | | | | S | | | | | S |
| NRC | | | | S | P | | | | | | | | S | | | | | S |
| NOAA | | | | | | | | | | | | | S | | | | | |
| FEMA | | | | | S | | | | | | | | S | | S | | | S |
| Department of Energy | | | | | S | S | | | | | | | | | | | | S |
| Department of Agriculture | | | | | S | S | | | | | | | | | | S | | S |
| Environmental Protection Agency | | | | | S | S | | | | | | | | | | S | | S |
| Department of Transportation | | | | | S | | | | | | | | S | | | S | | |
| Health and Human Services | | | | | S | | S | S | | | | | | | | | | |
| Housing and Urban Development | | | | | S | | | S | | | | | | | | | | |
| National Communications System | | | | S | | | | | | | | | | | | | | |
| Federal Aviation Administration | | | | | | | | | | | | | S | | | | | |
| UTILITY | | | | | | | | | | | | | | | | | | |
| PNPS | | | P | | P | | | | | | | | S | | S | | | |
| PRIVATE ORGANIZATIONS | | | | | | | | | | | | | | | | | | |
| Bus Providers | | | | | | | | | | | | S | | | | | | |
| Ambulance Providers | | | | | | | S | | | P | | S | | | | | | |
| Hospitals | | | | | | | S | | | P | | | | S | | | | |
| LOCAL RESPONSE ORGANIZATIONS | | | | | | | | | | | | | | | | | | |
| See Individual Plans | | | | | | | | | | | | | | | | | | |

P = Primary

S= Support